

LaGrand



AA PRF Wideload
Four Sons of this many times champion sell!!



LaGrand Wideload 75P ET
Sells as Lot 344
Full brother to SOP



LaGrand Reload SOP
1/2 Interest sold for \$55,500
in the Mile High Night Sale



Grand Champion
Pen of Bulls 2005



LaGrand Wideload 75P ET--Lot 344

344 LaGrand Wideload 75P ET Bull

P42538226 CALVED: FEB 24, 2004 TATTOO: 75P

AA BOOMER 611	REMITALL BOOMER 46B
AA PRF WIDELOAD	EF IDEALIST PENNY 812
P42325186 PRF MS SCARLETT 919	NJW 1Y WRANGLER 19D
	AA IMPERIAL LADY 2119

REMITALL KEYNOTE 20X	REMITALL TEAMSTER 9T
TSF MS KEYNOTE 729	REMITALL PATRICIA 99P
P24025002 BTF MS FORAGE 109W 9001	BTF FORAGE FINDER 109W
	SDF 27S MS BUTLER 37U

**EPD'S: BW 4.6 WW 48 YW 82 M 19 M&G 43
FAT -0.003 REA 0.38 IMF 0.03**

- BW 92 ADJ WW 656 WT 1-5-05 1180 LBS.
- Great numbers and a great cow family on the dam side. The dam is an own daughter of Keynote out of a Forage Finder dam.
- Retaining 1/2 interest and show rights.

• What excitement abounds here. This is a full brother to the \$55,500 high selling bull in the Mile High Night Sale, selling to Ray Farms, Abington, IL, sired by the many times champion, AA PRF WIDELOAD and out of one of the greatest daughters of Remitall Keynote 20X. Fantastic EPDs. This youngster could be your next herd bull. A dark red bull that squares up really well. A tremendous opportunity.

345 LaGrand Wideload 34P Bull

P42538187 CALVED: MAR 8, 2004 TATTOO: 34P

AA BOOMER 611	REMITALL BOOMER 46B
AA PRF WIDELOAD	EF IDEALIST PENNY 812
P42325186 PRF MS SCARLETT 919	NJW 1Y WRANGLER 19D
	AA IMPERIAL LADY 2119

BIGLIENI K VINDICATOR 6G	KLONDIKE VINDICATOR 337K
BIGLIENI VIN 6K	BIGLIENI ABI 7E
P42124912 BIGLIENI HANNAH 9H	WLB WILLIS 25C 114F
	LJR MAGGIE 56Z

**EPD'S: BW 3.5 WW 33 YW 53 M 11 M&G 28
FAT -0.001 REA 0.17 IMF -0.05**

- BW 92 ADJ 205 DAY WT 676 ADJ 365 DAY WT 1186
- A top Wideload son out of a high maternal bred cow. Note Klondike Vindicator 337K coupled with a Journagan Ranch cow on the dam side makes this bull one to consider.



LaGrand Wideload 34P--Lot 345



Gerber 135Y Dixie 13C--Dam of Lot 346



CT Farmer 114L--Sire of Lot 347

347 LaGrand Farmer 54N ET Bull

P42478978 CALVED: SEP 30, 2003 TATTOO: 54N
 GHC LAWMAN 108H
 CT FARMER 114L
 P42186454 CT MISS BOOMER 9621

FELTONS 512
 GERBER 512 DIXIE 36F
 P23915597 GERBER 135Y DIXIE 13C

GHC CRUTCH 58F
 GHC MS NANCY RENEE 48A
 REMITALL BOOMER 46B
 CT MISS 218G1 8603 (D0D)

FELTONS 403
 F 208 PROSPETA A45
 WTK 67U MIDWEST 135Y
 GERBER 452M DIXIE 24R

EPD'S: BW 2.9 WW 38 YW 63 M 17 M&G 36

FAT -0.010 REA 0.02 IMF -0.07

• BW 85 ADJ 205 DAY WT 721 ADJ 365 DAY WT 1203

• A son of the great Dixie 36F, one of the top donor cows. She is a maternal sister to the great donor, 80H, at Grandview Plantation. She has a beautiful udder and is certainly a dam of herd bulls. A low birth weight bull that can perform in any herd.

LaGrand Online 122P ET--Lot 346
346 LaGrand Online 122P ET Bull

P42538200 CALVED: MAR 16, 2004 TATTOO: 122P
 REMITALL EMBRACER 8E
 REMITALL ONLINE 122L
 P42254372 REMITALL CATALINA 24H

REMITALL ACME 10A
 PLAIN LAKE BELLE 20X 117P 5B
 MM RSM STOCKMASTER 512
 REMITALL CATALINA 139C

WTK 67U MIDWEST 135Y
 GERBER 135Y DIXIE 13C
 P23712181 GERBER 452M DIXIE 24R

WTK S48 GENESIS 67U
 WTK JESSICA VICTOR 101U
 BT BUTLER 452M
 GERBER 91A DIXIE 53N

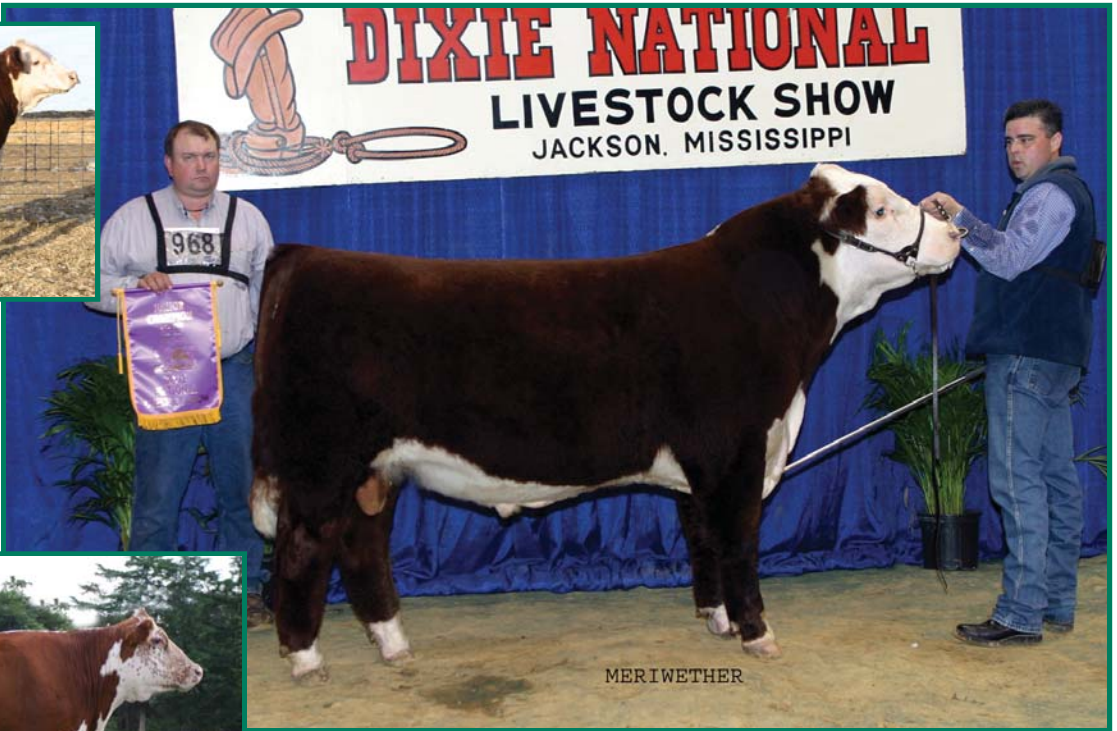
EPD'S: BW 3.8 WW 52 YW 90 M 17 M&G 43
 FAT -0.011 REA 0.39 IMF -0.03
 • BW 85 ADJ 205 DAY WT 812 ADJ 365 DAY WT 1500
 • A great herd bull prospect by the National Champion, Online, out of the great 13C donor cow pictured at 11 years of age. Look at the numbers here... Birth wt. 3.8 with a Yearling wt. of 90 and a plus .39 on REA.



Gerber 512 Dixie 36F--Dam of Lot 347



DIXIE NATIONAL LIVESTOCK SHOW JACKSON, MISSISSIPPI



Victoria 4G--Dam of Lots 348-352 & 362

LaGrand Online 102P ET--Lot 348

348 *LaGrand Online 102P ET* **Bull**

P42539072 CALVED: FEB 22, 2004 TATTOO: 102P

EPD'S: BW 4.0 WW 48 YW 85 M 15 M&G 39

FAT 0.005 REA 0.31 IMF 0.01

- BW 87 ADJ.L WW 729 WT 1-5-05 1158 LBS.
- Calf Champion at the recent Dixie National at Jackson, Ms. and a Class Winner at the Fort Worth Stock Show. A definite herd bull prospect. A low birth weight bull with a great spread from birth to yearling. The dam is the great 4G donor cow. He is a plus on Ribeye and a plus on IMF...a hard combination to achieve. A bull you can buy and use with confidence.

• A full brother to 103P and 121P.

• Retaining 1/2 interest and show rights.

349 *LaGrand Online 103P ET* **Bull**

P42539074 CALVED: FEB 24, 2004 TATTOO: 103P

EPD'S: BW 4.0 WW 48 YW 85 M 15 M&G 39

FAT 0.005 REA 0.31 IMF 0.01

• BW 96 ADJ 205 DAY WT 618 ADJ 365 DAY WT 1103

• A full brother to 102P and 121P. Breed leading genetics all the way.

350 *LaGrand Online 121P ET* **Bull**

P42539075 CALVED: MAR 20, 2004 TATTOO: 121P

REMITALL ONLINE 122L	REMITALL EMBRACER 8E	REMITALL ACME 10A
P42254372	REMITALL CATALINA 24H	PLAIN LAKE BELLE 20X 117P 5B
		MM RSM STOCKMASTER 512
		REMITALL CATALINA 139C

IGT 654 PAYLOAD 277S

VICTORIA 4G
P24049796 VICTORIA

ENFORCER 107H
RHF VICTRA 424 654
WINTUN MESSENGER 26W
OR L TRANSVIC 54915K

EPD'S: BW 4.0 WW 48 YW 85 M 15 M&G 39

FAT 0.005 REA 0.31 IMF 0.01

• BW 100 ADJ 205 DAY WT 662 ADJ 365 DAY WT 1136

• A stout brother to 102P and 103P that will make a positive contribution to your herd.



LaGrand Duster 120P ET--Lot 351

351 *LaGrand Duster 120P ET* **Bull**

P42539080 CALVED: MAR 15, 2004 TATTOO: 120P

EPD'S: BW 4.2 WW 45 YW 75 M 15 M&G 37

FAT 0.007 REA 0.25 IMF 0.01

• BW 95 ADJ 205 DAY WT 795 ADJ 365 DAY WT 1311

• This is one of our high weaning weight bulls. Above breed average weaning, yearling and ribeye. Tremendous!

352 *LaGrand Duster 111P ET* **Bull**

P42539079 CALVED: MAR 12, 2004 TATTOO: 111P

REMITALL KEYNOTE 20X	REMITALL TEAMSTER 9T
RU DUSTER 60D	REMITALL PATRICIA 99P
P42256804	BT PROPHET 117P
	RU 40L LASSIE 60S

IGT 654 PAYLOAD 277S

VICTORIA 4G
P24049796 VICTORIA

ENFORCER 107H
RHF VICTRA 424 654
WINTUN MESSENGER 26W
OR L TRANSVIC 54915K

EPD'S: BW 4.2 WW 45 YW 75 M 15 M&G 37

FAT 0.007 REA 0.25 IMF 0.01

• BW 85 ADJ 205 DAY WT 756 ADJ 365 DAY WT 1186

• The dam of 111P is a tremendous producing cow. Duster 60D is a great growth bull mating with this cow and should transmit a lot of performance to his calves.



GK Tracy 100C--Dam of Lots 353 and 354

353 LaGrand Boomer 31P ET Bull

P42539083 CALVED: MAR 4, 2004 TATTOO: 31P
 EPD'S: BW 4.6 WW 40 YW 66 M 20 M&G 40
 FAT 0.008 REA 0.41 IMF 0.00
 • BW 98 ADJ 205 DAY WT 681 365 ADJ WT. 1181

354 LaGrand Boomer 32P ET Bull

P42539084 CALVED: MAR 7, 2004 TATTOO: 32P
 REMITALL KEYNOTE 20X REMITALL TEAMSTER 9T
 REMITALL BOOMER 46B REMITALL PATRICIA 99P
 P23649249 RMTLL SALLY'S LASS 120X REMTIAL TOP HAT 206T
 HB SALLY TANGENT 50S

BAR JZ TRADITION 434V BT MOHICAN TRADITION 530
 GK TRACY 100C (DOD) BAR JZ BANNER LDY 693P
 P23677002 GK RUSTLING LADY 559W GK RGF RUSTLER
 GK VICTOIA 210 S133 (DOD)

EPD'S: BW 4.6 WW 40 YW 66 M 20 M&G 40
 FAT 0.008 REA 0.41 IMF 0.00
 • BW 105 ADJ 205 DAY WT 813 ADJ 365 DAY WT 1301
 • 31P and 32P are from a top donor from Gerber's that is serving in the Tennessee River Music, Inc. and Kesling herds. A big, powerful cow with a great udder. The grandam, 559W, was the best daughter ever by GK RGF Rustler. Cattle with a lot of power and predictability are built in these two bulls. The cross with 46B and 100C is really good. The 100C cow is a Dam of Distinction and her grandmother is a Dam of Distinction.

355 LaGrand Pringle 135P ET Bull

P42540691 CALVED: FEB 28, 2004 TATTOO: 135P
 REMITALL KEYNOTE 20X REMITALL TEAMSTER 9T
 HAROLDSON'S PRINGLE 20X 12G REMITALL PATRICIA 99P
 P42177451 THE CLIFFS P183 JOY 5C JR NICK THE BUTLER P183
 THE CLIFFS 18L JOY 35W

GK EXCELLO 116B GK FED EX 500Z
 KAYE KAYE JFR 211D VICKIE U81 72R (DOD)
 P23897189 JR LB 621 SAPPHIRE Y163 WS APPROVAL 621
 JR LB 604M CRYSTAL S190

EPD'S: BW 5.5 WW 48 YW 82 M 9 M&G 33
 FAT -0.006 REA 0.31 IMF -0.05
 • BW 98 ADJ 205 DAY WT 748 ADJ 365 DAY WT 1226
 • This bull will be very strong topped. His dam was a many times champion and is a very heavy muscled cow. She transmits that to her offspring.

356 LaGrand Domino 19P ET Bull

P42539576 CALVED: FEB 25, 2004 TATTOO: 19P
 EPD'S: BW 3.3 WW 30 YW 51 M 21 M&G 37
 FAT 0.015 REA 0.14 IMF 0.05
 • BW 78 ADJ 205 DAY WT 613 ADJ 365 DAY WT 1107

357 LaGrand Domino 104P ET Bull

P42539565 CALVED: MAR 5, 2004 TATTOO: 104P
 EPD'S: BW 3.3 WW 30 YW 51 M 21 M&G 37
 FAT 0.015 REA 0.14 IMF 0.05
 • BW 70 ADJ 205 DAY WT 631 ADJ 365 DAY WT 1068

358 LaGrand Domino 125P ET Bull

P42539573 CALVED: MAR 18, 2004 TATTOO: 125P
 SR MARK I J215 C1 DOMINO 8015
 OXH MARK DOMINO 8020 SR MISS B MARK E549
 18950672 OXH KATE 6047 1ET CL 1 DOMINO 1046
 OXH RITA 1028

GERBER VOYAGEUR 80X GK VOYAGEUR S56
 GERBER 80X DIXIE 106Z GERBER 306R TRACY 57T
 P23488090 GERBER 2105 DIXIE 22S RHF VICTOR 767 2105
 GERBER 452M DIXIE 12P

EPD'S: BW 3.3 WW 30 YW 51 M 21 M&G 37
 FAT 0.015 REA 0.14 IMF 0.05
 • BW 75 ADJ 205 DAY WT 716 ADJ 365 DAY WT 1146
 • Three sons of the maternal giant, 8020. What numbers you find in these three full brothers. These three bulls would be great to turn out with a large group of black heifers. An opportunity for this kind of uniformity does not present itself very often. Take advantage!!

359 LaGrand Bogart 37P Bull

P42539586 CALVED: MAR 14, 2004 TATTOO: 37P
 CS BOOMER 29F REMITALL BOOMER 46B
 STAR OBS BOGART 5L CS MISS 1ST FLAG 21A
 P42142971 NJW 1Y LARIAT 41E CIRCLE-D WRANGLER 832W
 NJW FROSTY 1Y

NJW 1Y WRANGLER 19D CIRCLE-D WRANGLER 832W
 GERBER 19D TRISH 087L NJW FROSTY 1Y
 P42170996 GERBER 5015 TRISH 111H BTF GRAZER 540 5015
 GERBER 434V TRISH 16F

EPD'S: BW 4.4 WW 51 YW 84 M 21 M&G 47
 FAT 0.003 REA 0.27 IMF 0.04
 • BW 95 ADJ 205 DAY WT 678 ADJ 365 DAY WT 1125
 • Strong genetics make up 37P. His dam comes from the very strong Gerber program. She is one of our top cows. Note the EPDs here! Plus on ribeye and a plus on IMF.

360 LaGrand Vic 07P Bull

P42539693 CALVED: JAN 17, 2004 TATTOO: 07P
 CES VICTOR 103T S84 RHF IGT VICTOR 103T
 ANHINGA VIC S84 K16 JLH VICTORIA 629 231
 P42069623 AF VICTORIA X101 H26 PW S84 VICTOR X101
 AF VICTORIA 69R 48E

STAR BARRY 174K LLL NUFF SAID 45H
 LCR BELLA 21M STAR T BONITA 35G
 P42289683 SUN MS CARMAN 11J NJW 1Y WRANGLER 19D
 RPH CARMAN 107Z

EPD'S: BW -1.4 WW 38 YW 57 M 17 M&G 36
 FAT 0.007 REA 0.16 IMF 0.00
 • BW 51 ADJ 205 DAY WT 702 ADJ 365 DAY WT 1153
 • A heifer bull that is very high maternal. A bull you will want to keep every daughter of.

**LaGrand Wideload
30P--Lot 361**



361 LaGrand Wideload 30P Bull

P42538186 CALVED: MAR 3, 2004 TATTOO: 30P
 AA BOOMER 611 REMITALL BOOMER 46B
 AA PRF WIDELOAD EF IDEALIST PENNY 812
 P42325186 PRF MS SCARLETT 919 NJW 1Y WRANGLER 19D
 AA IMPERIAL LADY 2119

WLB WILLIS 25C 114F NJW Z17 VAQUERO 25C
 BIGLIENI HANNAH 15K SHELL-RIVER NICKIE 13C
 P42124914 BIGLIENI BETH 30X SBR BUTLER 58F 215R
 KLONDIKE DONNA 400L

EPD'S: BW 4.6 WW 40 YW 64 M 15 M&G 35
 FAT -0.001 REA 0.16 IMF -0.05
 • BW 99 ADJ 205 DAY WT 662 ADJ 365 DAY WT 1231
 • A son of the many times champion, Wideload out of a Bill and Nancy Biglieni bred cow. The Willis bull left many outstanding daughters.



LaGrand Kodiak 6153--Lot 363

362 HHR LaGrand Wideload 386P Bull

P42514215 CALVED: MAR 17, 2004 TATTOO: 386P
 AA BOOMER 611 REMITALL BOOMER 46B
 AA PRF WIDELOAD EF IDEALIST PENNY 812
 P42325186 PRF MS SCARLETT 919 NJW 1Y WRANGLER 19D
 AA IMPERIAL LADY 2119

HH ADVANCE 6052F CL 1 DOMINO 392
 HHR ADELIN 304L HH MISS ADVANCE 160A (DOD)
 42197181 HHR IMPRESSION 266J C GOLD RUSH 1ET
 HHR HIGHLITE 12A

EPD'S: BW 4.0 WW 47 YW 80 M 14 M&G 37
 FAT 0.002 REA 0.20 IMF 0.04
 • BW 90 ADJ. WW 580 WT 1-5-05 1035 LBS.
 • A Wideload son with above average EPDs for Weaning and Yearling. Note the spread from birth to yearling.

363 LaGrand Kodiak 6153 Bull

P42531267 CALVED: JUN 15, 2003 TATTOO: 6153
 VCR EAST KODIAK 506E WTK 55Y BOND 75A
 S&S KODIAK 49J VCR MIS FLO JO 849X
 P41151138 S&S LADY LAMP 467B (DOD) DL DIGGER 15G 44U
 S&S LADY LAMP 188X

KGT 654 PAYLOAD 277S ENFORCER 107H
 VICTORIA 4G RHF VICTRA 424 654
 P24049796 VICTORIA WINTUN MESSENGER 26W
 OR L TRANSVIC 54915K

EPD'S: BW 3.1 WW 38 YW 61 M 13 M&G 33
 FAT 0.008 REA 0.13 IMF -0.02
 • BW 90 ADJ. WW 548 YW 1155
 • A son of 49J out of the great donor, 4G from California. 49J is a full brother to Cattleman who has been used throughout the Hereford industry with great success.

364 LaGrand Call 81P ET Bull

P42538241 CALVED: MAR 6, 2004 TATTOO: 81P
 H 83 EMBRACER 8006 REMITALL EMBRACER 8E
 BRL CALL 100L H MISS APPROVAL 9082
 P42196682 BRL DELUXIE 100A VLSF DELUXE ET 220W
 BRL BELLE 1455 10X

JSF 37 271 DEVO 23C RLOA R271 DYNASTY ET 57U
 FMC FERGS PRIDE JSF 183 VICTORIA 7A
 P24031183 FMC MORE PZAZZ 5 HHH PZAZZ
 WEB MS MORE GILEAN 912

EST. EPD'S: BW 2.2 WW 38 YW 65 M 18 M&G 38
 FAT -0.006 REA 0.11 IMF -0.10
 • BW 100 ADJ 205 DAY WT 619 ADJ 365 DAY WT 1065
 • Note the carcass EPDs are plus on Ribeye and plus on IMF. Hard to find in the Hereford breed.



BRL Call 100L--Sire of Lot 364



LaGrand Headliner 117P ET--Lot 365

366 LaGrand Kaiser 09P Bull

P42539584 CALVED: JAN 19, 2004 TATTOO: 09P
 C-S PURE GOLD 98170 C GOLD RUSH 1ET
 MSU KAISER 46K C MS DOM 93218 1ET
 P42051937 MSU VICTORIA 9F BOYD HEAVY HITTER 4007
 MSU MISS EXCEL 9D

WNH PAYMASTER 9606 IGT 654 PAYLOAD 277S
 AA PAY LADY 837 MISS SNIZHONI 901
 P41057597 AA PRIORITY GAL 073 BT LW PRIORITY 479W
 AA MS CALIBER 876

EPD'S: BW 5.7 WW 44 YW 71 M 16 M&G 37
FAT -0.003 REA 0.18 IMF -0.04
 • BW 100 ADJ 205 DAY WT 687 ADJ 365 DAY WT 1194
 • Strong growth genetics abound in this top son of Kaiser. His dam is loaded with milk and a very heavy muscled cow. This bull will add pounds to your calf crop.



LaGrand Red Hot 23N--Lot 369



NJW 832W 3A Gloria 26E--Dam of Lot 370

365 LaGrand Headliner 117P ET Bull

P42538197 CALVED: MAR 15, 2004 TATTOO: 117P
 FELTONS 517 FELTONS 403
 MSU STAR HEADLINER F PRINCESS A80 (D0D)
 P24058815 WNH MS OPTIMA 9401 MSU OPTIMUM Z03
 MISS SNIZHONI 901

BR L1 DOMINO 5069 CL 1 DOMINO 386
 STAR SS ROXIE LT 128H BR L1 DOMINETTE 8030
 P41036341 CLF WISE GIRL Z51 BB MSU 15S WISDOM
 MKP CLF ALEXIS U15

EPD'S: BW 5.1 WW 48 YW 76 M 18 M&G 42
FAT 0.003 REA 0.11 IMF -0.01
 • BW 90 ADJ 205 DAY WT 794 ADJ 365 DAY WT 1340
 • A son of the National Champion, Headliner. The sire of 117P was a member of one of the all-time great flushes in the breed. Strong genetics from this outstanding youngster.

367 LaGrand Domino 77P ET Bull

P42538234 CALVED: FEB 28, 2004 TATTOO: 77P
EPD'S: BW 3.3 WW 42 YW 68 M 21 M&G 42
FAT 0.002 REA -0.01 IMF 0.01

• BW 95 ADJ 205 DAY WT 703 ADJ 365 DAY WT 1123
 • Note the dam's side of this 5069 son's pedigree. He is out of a Feltons 517 daughter, one of the most consistent sires in the breed.

368 LaGrand Domino 76P ET Bull

P42538230 CALVED: FEB 25, 2004 TATTOO: 76P
 CL 1 DOMINO 386 L1 DOMINO 77618
 BR L1 DOMINO 5069 CL 1 DOMINETTE 832
 19532477 BR L1 DOMINETTE 8030 BR L1 DOMINO 5045
 BR L1 DOMINETTE 6049

FELTONS 517 FELTONS 403
 WCC FASTINATION F12 F PRINCESS A80 (D0D)
 P23907956 BOYD FASTINATION 69C HAROLDSON RAIDER P183 2Z
 BOYD FASINATION Z86

EPD'S: BW 3.3 WW 42 YW 68 M 21 M&G 42
FAT 0.002 REA -0.01 IMF 0.01
 • BW 100 ADJ 205 DAY WT 698 ADJ 365 DAY WT 1179
 • A grandson of 386, one of the most dependable bulls in the breed. Very nice numbers on this bull. A combination of two of the most predictable bulls in the breed, 386 and 517.

369 LaGrand Red Hot 23N Bull

Commercial CALVED: AUG 14, 2003 TATTOO: 23N
 RF TARGET 105A JR 15G PACER P202
 DJR LF RED HOT 913 CKP MISS HICKORY 505T
 P41143761 ROF RENAISSANCE 307F 4S RENEWAL
 BKR LADY HOT FLASH 31S

DAM IS A REGISTERED POLLED HEREFORD COW BUT NOT IDENTIFIABLE

• ADJ 205 DAY WT. 726 ADJ 365 DAY WT 1268
 • The Red Hot sons are thick, meaty cattle that possess a lot of loin. 23N is no exception. Be sure and look him up. He has the extra age to take care of a lot of cows.

370 LaGrand Pringle 134P ET Bull

P42540690 CALVED: FEB 25, 2004 TATTOO: 134P
 REMITALL KEYNOTE 20X REMITALL TEAMSTER 9T
 HAROLDSON'S PRINGLE 20X 12G REMITALL PATRICIA 99P
 P42177451 THE CLIFFS P183 JOY 5C JR NICK THE BUTLER P183
 THE CLIFFS 18L JOY 35W

CIRCLE-D WRANGLER 832W BAR H L1 CHANCE 55S
 NJW 832W 3A GLORIA 26E CRCLE D193 SILHOUET 335S
 P23839301 NJW P183 GLORIA 3A JR NICK THE BUTLER P183
 JR N61 GLORIA S151

EPD'S: BW 6.0 WW 53 YW 87 M 13 M&G 39
FAT -0.005 REA 0.28 IMF -0.05
 • BW 90 ADJ 205 DAY WT 698 ADJ 365 DAY WT 1123
 • A paternal brother to the Reserve Grand Champion Bull in Denver. A bull that will put a strong top in his calves. Note the 87 yearling EPD.

371 LaGrand Online 22N Bull

P42478949 CALVED: AUG 12, 2003 TATTOO: 22N
 REMITALL EMBRACER 8E REMITALL ACME 10A
 REMITALL ONLINE 122L PLAIN LAKE BELLE 20X 117P 5B
 P42254372 REMITALL CATALINA 24H MM RSM STOCKMASTER 512
 REMITALL CATALINA 139C

WLB WILLIS 25C 114F NJW Z17 VAQUERO 25C
 BIGLIENI HANNAH 9J SHELL-RIVER NICKIE 13C
 P42016605 BIGLIENI BETH 30X SBR BUTLER 58F 215R
 KLONDIKE DONNA 400L

EPD'S: BW 3.7 WW 47 YW 82 M 13 M&G 37
 FAT -0.003 REA 0.36 IMF -0.03
 • BW 100 ADJ 205 DAY WT 623 ADJ 365 DAY WT 1189
 • High growth, high ribeye....both mean more dollars in your pocket.
 22N will also leave a set of daughters that you will be proud of.



LaGrand Online 22N--Lot 371

372 LaGrand Online 27N Bull

P42478954 CALVED: AUG 17, 2003 TATTOO: 27N
 REMITALL EMBRACER 8E REMITALL ACME 10A
 REMITALL ONLINE 122L PLAIN LAKE BELLE 20X 117P 5B
 P42254372 REMITALL CATALINA 24H MM RSM STOCKMASTER 512
 REMITALL CATALINA 139C

WLB WILLIS 25C 114F NJW Z17 VAQUERO 25C
 BIGLIENI HANNAH 3H SHELL-RIVER NICKIE 13C
 P41094926 BIGLIENI PAULA 6F BIGLIENI MARY 5D
 BIGLIENI BETH 30X

EPD'S: BW 4.2 WW 48 YW 83 M 15 M&G 39
 FAT -0.003 REA 0.35 IMF -0.03
 • BW 100 ADJ 205 DAY WT 580 WT 11-4-05 1440 LBS.
 • A high ribeye bull with a great yearling EPD. A lot of performance in this bull.

374 LaGrand Online 54P Bull

P42539077 CALVED: MAR 19, 2004 TATTOO: 54P
 REMITALL EMBRACER 8E REMITALL ACME 10A
 REMITALL ONLINE 122L PLAIN LAKE BELLE 20X 117P 5B
 P42254372 REMITALL CATALINA 24H MM RSM STOCKMASTER 512
 REMITALL CATALINA 139C

MID DISTANCE 8H S7R 218Y MERIDIAN 325D
 JUSTAMERE 8H BELL 952M TA-BAR LISA 108C
 P42523540 JUSTAMERE 304Z BELL 276H JUSTAMERE 30T ZOR0 304Z
 JUSTAMERE SLEW BELL 69TX

EPD'S: BW 1.1 WW 49 YW 84 M 9 M&G 34
 FAT -0.005 REA 0.38 IMF -0.02
 • BW 70 ADJ 205 DAY WT 670 ADJ 365 DAY WT 1188
 • A super low birth weight Online son that should work well on heifers.
 The Online daughters are milking well. Note the spread from birth to yearling.



*Remitall Online 122L
 Two-Time National Champion
 Sire of Lots 346, 348, 349,
 350, 371, 372, 374*

373 LaGrand Domino 39P Bull

P42538188 CALVED: MAR 20, 2004 TATTOO: 39P
 OXH DOMINO 7002 CL 1 DOMINO 1046
 FELTONS DOMINO 774 OXH KATE 5175
 P23864055 FELTONS B72 FELTONS 403
 FF MARCIA A85

FELTONS MANDATE 317 FELTONS ENDURANCE 745
 FELTONS CHRISTY R38 FELTONS DOMINETTE H50(D0D)
 P42347927 FELTONS 326 VICKI J41 FHR CAIRNS 19Y 29C
 FELTONS B83 (DOD)

EPD'S: BW 3.1 WW 46 YW 77 M 24 M&G 47
 FAT 0.19 REA 0.11 IMF 0.34
 • BW 90 ADJ 205 DAY WT 695 ADJ 365 DAY WT 1154
 • What a chance to own a son of Feltons Domino 774. This bull is a paternal brother to both Feltons Ozzie 492 and Feltons Legend 242, both highly sought after AI sires.



Feltons Ozzie 492--Paternal Brother to Lot 373



LaGrand Boomer 119P ET--Lot 375



K See K--Dam of Lots 375, 376, 377 & 378



JJD Shrek B8157 3111--Lot 379

380 LaGrand Shrek 24P Bull

42538208 CALVED: FEB 28, 2004 TATTOO: 24P
 MOHICAN TRM JAVA 25J BAR B MOHICAN HERITAGE
 SSF JJD SHREK 669 MOHICAN LADY 9G
 P42155926 MOHICAN LIZA 44F (DOD) REMITALL BOOMER 46B
 MOHICAN LIZA M59Z
 C-S PURE GOLD 98170 C GOLD RUSH 1ET
 JJD VICTORIA GOLD 2042 ET C MS DOM 93218 1ET
 P42353537 JJJ VICTORIA 109W 112 BTF FORAGE FINDER 109W
 JLH VICTRA 1106 U599

EPD'S: BW 4.9 WW 45 YW 73 M 24 M&G 47
FAT -0.004 REA 0.23 IMF -0.02
 • BW 92 ADJ 205 DAY WT 615 ADJ 365 DAY WT 1139
 • A Shrek son of our donor cow, 2042. The mother of 2042 is one of the very best cows in the Hereford industry. Extremely high maternal values here. The 112 cow is the dam of herd bulls and donor cows.

375 LaGrand Boomer 119P ET Bull

P42538199 CALVED: MAR 15, 2004 TATTOO: 119P
EPD'S: BW 3.2 WW 44 YW 80 M 21 M&G 43
FAT 0.004 REA 0.40 IMF 0.00

• BW 85 ADJ WW 833 WT 1-5-05 1249 LBS.
 • A low birth weight, great numbered son of 29F and many times champion, K See K. Many of the breed greats are in this pedigree.

376 LaGrand Boomer 118P ET Bull

P42538198 CALVED: MAR 15, 2004 TATTOO: 118P
EPD'S: BW 3.2 WW 44 YW 80 M 21 M&G 43
FAT 0.004 REA 0.40 IMF 0.00

• BW 85 ADJ 205 DAY WT 687 ADJ 365 DAY WT 1146
 • Tremendous spread in EPDs here. Below breed average for birth. Above breed average for weaning, yearling, milk, milk & grow and rea.

377 LaGrand Boomer 130P ET Bull

42538205 CALVED: MAR 19, 2004 TATTOO: 130P
EPD'S: BW 3.2 WW 44 YW 80 M 21 M&G 43
FAT 0.004 REA 0.40 IMF 0.00

• BW 85 ADJ 205 DAY WT 734 ADJ 365 DAY WT 1275
 • Tremendous ribeye. The dam is by NJW 1Y Wrangler 19D, one of the most predictable bulls in the breed. Reliable genetics here.

378 LaGrand Boomer 132P ET Bull

P42538206 CALVED: MAR 18, 2004 TATTOO: 132P
 REMITALL BOOMER 46B REMITALL KEYNOTE 20X
 CS BOOMER 29F RMTLL SALLYS LASS 120X
 P23925982 CS MISS 1ST FLAG 21A GS CHECKERED FLAG
 DS MS TOP PRIORITY 826

NJW 1Y WRANGLER 19D CIRCLE-D WRANGLER 832W
 K SEE K NJW FROSTY 1Y
 P41088043 KAYE KAYE GK EXCELLO 116B
 JR LB 621 SAPPHIRE Y163

EPD'S: BW 3.2 WW 44 YW 80 M 21 M&G 43
FAT 0.004 REA 0.40 IMF 0.00
 • BW 90 ADJ 205 DAY WT 682 ADJ 365 DAY WT 1303
 • A full brother to 119P, 118P, 130P. A chance to put four brothers with great EPDs to work in your herd.

379 JJD Shrek B8157 3111 Bull

P42370932 CALVED: MAY 1, 2003 TATTOO: 3111
 MOHICAN TRM JAVA 25J BAR B MOHICAN HERITAGE
 SSF JJD SHREK 669 MOHICAN LADY 9G
 P42155926 MOHICAN LIZA 44F (DOD) REMITALL BOOMER 46B
 MOHICAN LIZA M59Z

C-S PURE GOLD 98170 C GOLD RUSH 1ET
 JJD GOLDEN JEWEL B8 157 C MS DOM 93218 1ET
 P42185573 MMPH JEWEL B8 LOUADA 91U JUNEAU 12Y
 LADY LUCK HVH 606

EPD'S: BW 5.3 WW 45 YW 71 M 20 M&G 43
FAT -0.004 REA 0.22 IMF -0.04
 • BW 80 WW 680 YW 1289
 • A son of Shrek, who is rapidly becoming one of the popular sires in the breed. The grandam was a great donor cow and the dam of 311 is one of our top cows. A low birth weight bull that is above breed average in weaning, yearling, milk and milk & grow.

381 LaGrand Shrek 31N Bull

P42478958 CALVED: AUG 25, 2003 TATTOO: 31N
 MOHICAN TRM JAVA 25J BAR B MOHICAN HERITAGE
 SSF JJD SHREK 669 MOHICAN LADY 9G
 P42155926 MOHICAN LIZA 44F (DOD) REMITALL BOOMER 46B
 MOHICAN LIZA M59Z

WLB WILLIS 25C 114F NJW Z17 VAQUERO 25C
 BIGLIENI HANNAH 20H SHELL-RIVER NICKIE 13C
 P41045253 BIGLIENI MARY 4C BIGLIENI JOSIAH GOOD122R
 BIGLIENI BETH 30X

EPD'S: BW 4.3 WW 35 YW 55 M 16 M&G 33
FAT -0.002 REA 0.09 IMF -0.04
 • BW 100 ADJ 205 DAY WT 589 ADJ 365 DAY WT 1121
 • A Shrek son out of a Willis daughter. They are known for the milk and power they transmit to their offspring.

Polled Hereford Females

382 LaGrand Dixie 109P ET Heifer

P42539567 CALVED: MAR 10, 2004 TATTOO: 109P
 EPD'S: BW 3.3 WW 30 YW 51 M 21 M&G 37
 FAT 0.015 REA 0.14 IMF 0.05 • ADJ. WW 631

383 LaGrand Dixie 114P ET Heifer

P42539571 CALVED: MAR 13, 2004 TATTOO: 114P
 SR MARK I J215 C1 DOMINO 8015
 OXH MARK DOMINO 8020 SR MISS B MARK E549
 18950672 OXH KATE 6047 1ET CL 1 DOMINO 1046
 OXH RITA 1028

GERBER VOYAGEUR 80X GK VOYAGEUR S56
 GERBER 80X DIXIE 106Z GERBER 306R TRACY 57T
 P23488090 GERBER 2105 DIXIE 22S RHF VICTOR 767 2105
 GERBER 452M DIXIE 12P

EPD'S: BW 3.3 WW 30 YW 51 M 21 M&G 37
 FAT 0.015 REA 0.14 IMF 0.05 • ADJ. WW 697

• A beautiful pair of daughters of the high EPD bull, 8020. These heifers could be foundation females in your herd. The grandam and great grandam were foundation genetics for Gerber Polled Herefords. Excellent EPDs that can help any operation

384 LaGrand Miss Kaye 136P ET Heifer

P42540692 CALVED: FEB 29, 2004 TATTOO: 136P
 EDP'S: BW 5.5 WW 48 YW 82 M 9 M&G 33
 FAT -0.006 REA 0.31 IMF -0.05 • ADJ. WW 705

385 LaGrand Miss Kaye 138P ET Heifer

P42540693 CALVED: FEB 29, 2004 TATTOO: 138P
 REMITALL KEYNOTE 20X REMITALL TEAMSTER 9T
 HAROLDSON'S PRINGLE 20X 12G REMITALL PATRICIA 99P
 P42177451 THE CLIFFS P183 JOY 5C JR NICK THE BUTLER P183
 THE CLIFFS 18L JOY 35W
 GK EXCELLO 116B GK FED EX 500Z
 KAYE KAYE JFR 211D VICKIE U81 72R (DOD)
 P23897189 JR LB 621 SAPPHIRE Y163 WS APPROVAL 621
 JR LB 604M CRYSTAL S190

EPD'S: BW 5.5 WW 48 YW 82 M 9 M&G 33
 FAT -0.006 REA 0.31 IMF -0.05 • ADJ. WW 746

• Daughters of Kaye Kaye, a many times champion. A female that transmits muscle to her offspring. These heifers will produce big, stout calves that will be at the top of your calf crop.

386 LaGrand Miss 3008 06P Heifer

P42538183 CALVED: JAN 14, 2004 TATTOO: 06P
 FELTONS 517 FELTONS 403
 RRR MR FELT 3008 F PRINCESS A80 (DOD)
 P23703420 RRR MS VICT 6191 RHF VICTOR 767 2123
 RRR MS PROSP 786

GERBER ACCLAIM 43A FELTONS 488
 SCHU-LAR 43D OF 1055 43A GERBER KR DIXIE 7X
 P24014992 G&R JUSTA A DOLL 1055 G&R JUSTA GUY 834
 G&R DOLLY 480

EPD'S: BW 2.3 WW 44 YW 78 M 18 M&G 40
 FAT -0.006 REA 0.05 IMF 0.12 • ADJ. WW 512

• A paternal sister to our Reserve National Champion Female, DAN 3008 Foxy Gal 2E 1N. 3008 is the number one bull in the breed for all traits.

388 LaGrand Hannah 22P Heifer

P42538185 CALVED: FEB 26, 2004 TATTOO: 22P
 AA BOOMER 611 REMITALL BOOMER 46B
 AA PRF WIDELOAD EF IDEALIST PENNY 812
 P42325186 PRF MS SCARLETT 919 NJW 1Y WRANGLER 19D
 AA IMPERIAL LADY 2119

WLB WILLIS 25C 114F NJW Z17 VAQUERO 25C
 BIGLIENI HANNAH 15J SHELL-RIVER NICKIE 13C
 P42016607 B&S GRACEFUL LADY 43U B&S BIG MAC 141N 26S
 B&S VICTORIA 701S (DOD)

EPD'S: BW 2.5 WW 33 YW 52 M 15 M&G 31
 FAT 0.001 REA 0.17 IMF -0.05 • ADJ. WW 533

• Note this top Wideload daughter. Note birth epd. The 701S is a Dam of Distinction still at 11 years of age.



OXH Mark Domino 8020--Sire of Lots 382 and 383



Kaye Kaye--Dam of Lots 384 and 385

387 LaGrand Victoria 15P Heifer

P42538184 CALVED: FEB 12, 2004 TATTOO: 15P
 FELTONS SOUNDER 912 FELTONS LUTE 680
 FELTONS LOCOMOTIVE 204 FF MARCIA A71 (DOD)
 P42016167 FELTONS MATRON G42 (DOD) FELTONS MATTHEW 597
 DR MISS DERADO 974

C MILESTONE 9150 C L1 MILE HIGH 2ET
 BB 9150 VICTORIA 6M HH MISS ADVANCE 104A (DOD)
 P42354889 BB 25C VICTORIA 8H WLB WILLIS 25C 114F
 BOYD VICTORIA 4030

EPD'S: BW 3.4 WW 34 YW 54 M 18 M&G 35
 FAT -0.004 REA -0.07 IMF 0.08 • ADJ. WW 532

• A granddaughter of Feltons Sounder 912, whose daughters were highly sought after in the Felton dispersion. The dam of 15P was a highly successful show heifer that has made an excellent cow.

389 LaGrand Legacy 11P Heifer

P42539088 CALVED: FEB 1, 2004 TATTOO: 11P
 RJH MOMENTUM H45 3D NO LIMIT 09E
 RJH NEW DIMENSION K40 JR Y168 GLORIA C104
 P42052450 RJH ALLURE PINNACLES PROSPECT B21
 MISS VICTRES DAY

CES VICTOR 103T P189 RHF IGT VICTOR 103T
 BIGLIENI LEGACY 18G JLN VICTORIA 2105 X267
 P24053420 GK LADY VICKIE 212 SBR BUTLER 58F 215R
 GF VICKIE 212

EPD'S: BW 4.3 WW 42 YW 70 M 21 M&G 43
 FAT -0.004 REA 0.22 IMF -0.04 • ADJ. WW 553

• Tremendous epds on this New Dimension daughter. Above breed average for weaning, yearling and milk.