

# LaGrand

## ANGUS & HEREFORD RANCH 2004 PEN & CARLOAD BULLS!

**BULLS BY:**



SPECIAL DESIGN L309

**BULLS BY:**



LCC BIG RIVER 3499

**ANNUAL BULL SALE APRIL 10, 2004**  
**300 BULLS, 100 FEMALES**

All cattle tested  
negative for  
Johnes and  
Bovine Leukosis  
Virus

**Duane & Lance Pankratz, Owners**

Office (605) 925-7611, Fax (605) 925-4354  
Lance Home (605) 925-4283, Cell (605) 359-9221

Steve Patton, Purebred Manager

Cell (605) 359-6537

Home (605) 925-4963

44130 279th St.

Freeman, SD 57029

E-mail: [kpatton@gwtc.net](mailto:kpatton@gwtc.net)

Web site: [www.lagranchranch.com](http://www.lagranchranch.com)



# LAGRAND BIG RIVER 3634

A maternal brother to our "Regulator 0405" bull.

Calved: 1-8-2003 Bull +14469787 Tattoo: 3634  
 Leachman Saughatchee 3000C #N Bar Emulation EXT  
 LCC Big River 3499J Leachman BC 7100  
 +13671407 Bon View Pride 664 #+GAR Sleep Easy 1009  
 #Bon View Pride 1551  
 #Oneills Duke +R&J Milky Way 1406  
 Bear MTN Lady Eraline 302 Oneills Delia 465  
 11898839 +Oneills Eraline 100 #Premier Independence KN  
 #Oneills Eraline 42

EPD	ULTRA
BEPD	%IMF
+3.1	+0.03
WEPD	RE
+4.6	+1.15
MILK	FAT
+1.24	+0.103
YEPD	%RP
+1.83	+1.19



# LAGRAND DIVERSITY 3307

A herd bull out of one of our very top donor cows.

Calved: 1-1-2003 Bull +14392214 Tattoo: 3307  
 #+GAR Sleep Easy 1009 #Tehama Bando 155  
 Millcreek Diversity Blackclass GAR 103  
 12740561 Millcreek Travel Lass #RR Traveler 5204  
 Millcreek Precious Lass  
 #TC Dividend 963 #+Leachman Prompter  
 G Bar Pride Lucy 9329 TC Erica Eileen 6006  
 +13346943 +RA Pride Lucy 626 #GDAR Gold Nugget 766  
 Hyline Pride Lucy 9043

CARCASS CW		
EPD	+9	ULTRA
BEPD	MARB	%IMF
+2.8	+1.13	-1.04
WEPD	RE	RE
+4.1	+1.08	+1.28
MILK	FAT	FAT
+1.26	+0.010	+0.005
YEPD	%RP	%RP
+1.81	+1.10	+1.12



# LAGRAND SPECIAL DESIGN H314

Same cow family as SVF Bandolier. Full sister sold for \$26,000 for one-half interest in our 2003 production sale.

Calved: 1-3-2003 Bull +14469795 Tattoo: H314  
 Bon View New Design 878 #B/R New Design 036  
 WCC Special Design L309 Bon View Gammer 85  
 +13846942 N Bar Primrose 2424 #Emulation 31 (FX)  
 Primrose N Bar 9962  
 #+GAR Sleep Easy 1009 #Tehama Bando 155  
 Ponderosa Primrose Lady 436 Blackclass GAR 103  
 12676020 +Ponderosa Primrose Lady 97 B #Hyline Nickel  
 #Primrose Lady 446 GDAR

EPD
BEPD
+2.9
WEPD
+4.8
MILK
+1.25
YEPD
+1.77



# LAGRAND SPECIAL DESIGN H301

Flushmate to Lot 3.

Calved: 1-1-2003 Bull +14469794 Tattoo: H301  
 Bon View New Design 878 #B/R New Design 036  
 WCC Special Design L309 Bon View Gammer 85  
 +13846942 N Bar Primrose 2424 #Emulation 31 (FX)  
 Primrose N Bar 9962  
 #+GAR Sleep Easy 1009 #Tehama Bando 155  
 Ponderosa Primrose Lady 436 Blackclass GAR 103  
 12676020 +Ponderosa Primrose Lady 97 B #Hyline Nickel  
 #Primrose Lady 446 GDAR

EPD
BEPD
+2.9
WEPD
+4.8
MILK
+1.25
YEPD
+1.77



# LAGRAND BIG RIVER 3392

Out of a first calf heifer, VDAR Lucy tribe.

Calved: 1-13-2003 Bull 14389170 Tattoo: 3392  
 Leachman Saughatchee 3000C #N Bar Emulation EXT  
 LCC Big River 3499J Leachman BC 7100  
 +13671407 Bon View Pride 664 #+GAR Sleep Easy 1009  
 #Bon View Pride 1551  
 #+VDAR Lucys Boy #Traveler 1148 GDAR  
 Roth Lucy 0431 +VDAR Pine Drive Lucy 5  
 +13656341 +VDAR Lucy 3004 #VDAR New Trend 315  
 VDAR Lucy 427

EPD	ULTRA
BEPD	%IMF
+3.5	+0.02
WEPD	RE
+4.4	+1.04
MILK	FAT
+2.4	+0.022
YEPD	%RP
+8.2	+1.20



# LAGRAND FAMOUS 3792

A maternal brother to Lot 6 was a top-seller in our 2001 bull sale.

Calved: 1-23-2003 Bull +14513528 Tattoo: 3792  
 #SAF Fame #Minerts Fortune 2000  
 Famous 7001 #+SAF Royal Lass 1027  
 12829336 TK Karen 1369 #AAR New Trend  
 #VDAR Karen 978  
 #GAR Precision 1680 #Tehama Bando 155  
 GAR Precision 2445 9J9 GAR 856  
 +12548703 GAR Pierre 2511 #GDAR Rito 596 LT  
 Finks 8132 of 68 Hoss

CARCASS CW		
EPD	+15	ULTRA
BEPD	MARB	%IMF
+4.1	+1.29	+1.12
WEPD	RE	RE
+4.1	+1.34	+1.45
MILK	FAT	FAT
+1.20	+0.002	+0.020
YEPD	%RP	%RP
+1.77	+1.22	+1.58



## LA GRAND BIG RIVER H317

Dam is a donor by  
"036," back to Bon  
View Katinka 2545 for  
a grandam.

Calved: 1-4-2003 Bull +14464691 Tattoo: H317

Leachman Saugahatchee 3000C #N Bar Emulation EXT  
LCC Big River 3499J Leachman BC 7100  
+13671407 Bon View Pride 664 #+GAR Sleep Easy 1009  
#Bon View Pride 1551

#B/R New Design 036 #VDAR New Trend 315  
Bon View Katinka 1807 B/R Blackcap Empress 76  
12783572 Bon View Katinka 764 #Bon View Bando 598  
#Bon View Katinka 2545

EPD	ULTRA
BEPD	%IMF
+3.0	+1.13
WEPD	RE
+39	+1.09
MILK	FAT
+23	+1.010
YEPD	%RP
+77	-1.08



## LA GRAND 878 NEW DESIGN 3417

Same "Ellen" cow  
family that created  
"New Horizon 001."

Calved: 1-18-2003 Bull 14389211 Tattoo: 3417

#B/R New Design 036 #VDAR New Trend 315  
Bon View New Design 878 B/R Blackcap Empress 76  
13062750 Bon View Gammer 85 #Bon View Bando 598  
Bon View Gammer 233

Sitz SLS Rainmaker 7596 #GDAR Rainmaker 340  
North Fork Ellen 9053 SLS Barbara Perfection 2571  
+13301579 #Hyline Ellen 9062 #Hyline Oscar 555  
#Hyline Ellen 472

CARCASS		
EPD	I+10	ULTRA
BEPD	MARB	%IMF
+3.7	+1.16	-1.02
WEPD	RE	RE
+44	+1.13	+1.28
MILK	FAT	FAT
+25	+1.022	+1.012
YEPD	%RP	%RP
+81	-1.23	+1.16



## LA GRAND NEW HORIZON 3327

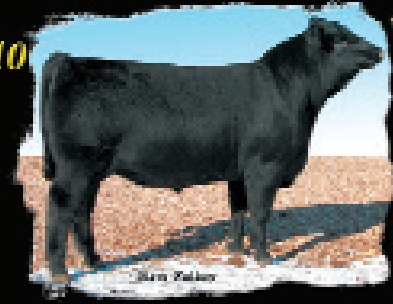
Solid bull producing  
dam, three maternal  
brothers averaged more  
than \$3,000.

Calved: 1-3-2003 Bull 14452446 Tattoo: 3327

#B/R New Design 323 #B/R New Design 036  
PVF New Horizon 001 B/R Ruby of Tiffany 155  
+13606093 Hyline Ellen 410 #Hyline Travel Agent  
#Hyline Ellen 9062

#GAR Traveler 1489 #QAS Traveler 23-4  
RA Pride Traveler 7262 GAR Bando 237  
12976680 SAV Emulation Pride 5249 #Bon View Emulation EXT 473  
SAV Sky Pride 2123

CARCASS		
EPD	I+4	ULTRA
BEPD	MARB	%IMF
+2.9	+1.04	-1.09
WEPD	RE	RE
+38	+1.21	+1.16
MILK	FAT	FAT
+21	-1.010	+1.001
YEPD	%RP	%RP
+67	+1.29	+1.15



## LA GRAND SPECIAL DESIGN 3406

Dam was a super  
donor here, she's out  
of a full sister to GAR  
Sleep Easy 1009.

Calved: 1-16-2003 Bull +14389199 Tattoo: 3406

Bon View New Design 878 #B/R New Design 036  
WCC Special Design L309 Bon View Gammer 85  
+13846942 N Bar Primrose 2424 #Emulation 31 (FX)  
Primrose N Bar 9962

#Paramont Ambush 2172 #Bandalier Eston Durness 42B  
GAR Ambush 1175 EWS Miss Burgess 1720  
+12548531 +GAR Bando 09 #Tehama Bando 155  
Blackclass GAR 103

EPD
BEPD
+1.6
WEPD
+45
MILK
+24
YEPD
+73



## LA GRAND SPECIAL DESIGN 3340

Dam is a solid bull  
producer, sons have  
sold well.

Calved: 1-6-2003 Bull 14389102 Tattoo: 3340

Bon View New Design 878 #B/R New Design 036  
WCC Special Design L309 Bon View Gammer 85  
+13846942 N Bar Primrose 2424 #Emulation 31 (FX)  
Primrose N Bar 9962

#+Krugerrands Moneyline #Krugerrand of Donamere 490  
WK Miss Stacker 7110 Ankony 5G00 Blackbird GC017  
12835698 Jauer Stacker 0116 5106 #CH Stacker 7040  
Jauer 312 Shoshone 5106 3114

EPD
BEPD
+2.5
WEPD
+49
MILK
+17
YEPD
+81



## LA GRAND 338 RIGHT TIME 3312

Numbers and pedigree top  
best EPD spread bull of  
carload. Maternal siblings  
to dam averaged more  
than \$5,000.

Calved: 1-1-2003 Bull 14396658 Tattoo: 3312

#+Leachman Right Time #N Bar Emulation EXT  
Hyline Right Time 338 Leachman Erica 0025  
13058662 Hyline Pride 265 +Hyline SVF Traveler 0115  
Hyline Pride 870

Twin Valley Precision E161 (FR) #GAR Precision 1680  
Roth Wendy 1550 +WCC Blackcap C9 (R)  
+13931145 +Double Bar Wendy 508-0100 #CH 054 Rito 0100  
KMR Wendy 508

EPD	ULTRA
BEPD	%IMF
+8	+1.09
WEPD	RE
+52	+1.37
MILK	FAT
+27	+1.0
YEPD	%RP
+96	+1.19

13



**LAGRAND  
NEW DESIGN  
3306**

*Dam is a maternal  
sister to Genex bull  
Wulffs EXT.*

Calved: 1-1-2003 Bull 14393617 Tattoo: 3306  
 #B/R New Design 036 #VDAR New Trend 315  
 Bon View New Design 1407 B/R Blackcap Empress 76  
 12783540 Bon View Pride 664 #+GAR Sleep Easy 1009  
 #Bon View Pride 1551  
 +GDAR SVF Russ 184B #GDAR Executive 727  
 Roth Erica Dianna 1558 +GDAR Forever Lady 719  
 +13932726 +Wulffs Erica Diana F123 #Tehama Bando 155  
 Wulffs Erica Dianna A308

CARCASS	
EPD	CW
I-3	
BEPD	MARB
+6	I+.27
WEPD	RE
+41	I+.10
MILK	FAT
+23	I-.011
YEPD	%RP
+84	I+.26

14



**LAGRAND  
NEW DESIGN  
3367**

*Grandam is SAF  
Forever Lady 6011.*

Calved: 1-9-2003 Bull 14393635 Tattoo: 3367  
 #B/R New Design 036 #VDAR New Trend 315  
 Bon View New Design 1407 B/R Blackcap Empress 76  
 12783540 Bon View Pride 664 #+GAR Sleep Easy 1009  
 #Bon View Pride 1551  
 +GDAR SVF Russ 184B #GDAR Executive 727  
 Berryessa Forever lady 538 +GDAR Forever Lady 719  
 +13762623 +SAF Forever Lady 6011 #Bon View Bando 598  
 GDAR Forever Lady 246

CARCASS	
EPD	CW
I+0	
BEPD	MARB
+2.9	I+.27
WEPD	RE
+42	I+.14
MILK	FAT
+25	I-.012
YEPD	%RP
+86	I+.28

15



**LAGRAND  
NEW FRONTIER  
3337**

*The grandam of this bull  
produced a \$9,500 bull in  
our 2002 bull sale going  
to Henry Morgan of  
Kansas.*

Calved: 1-5-2003 Bull 14393625 Tattoo: 3337  
 #B/R New Design 036 #VDAR New Trend 315  
 B/R New Frontier 095 B/R Blackcap Empress 76  
 +13588640 White Fence Pride H1 #Connealy Dateline  
 #Pleasant Pill of Conanga  
 #+Leachman Right Time #N Bar Emulation EXT  
 Roth Lady 1060 Leachman Erica 0025  
 13848644 Bushs 096 Lady Rainmaker 664 GDAR Rainmaker 118  
 BA 096 Lady Sara 78

CARCASS		
EPD	I+10	ULTRA
I+10		
BEPD	MARB	%IMF
+3.0	I+.17	I+.26
WEPD	RE	RE
+41	I+.19	I+.16
MILK	FAT	FAT
+26	I-.004	I+.002
YEPD	%RP	%RP
+76	I+.14	I+.09

16



**LAGRAND  
NEW HORIZON  
3364**

*Out of a two-year-  
old Lucy Boy x 598  
Forever Lady dam!*

Calved: 1-9-2003 Bull 14389142 Tattoo: 3364  
 #B/R New Design 323 #B/R New Design 036  
 PVF New Horizon 001 B/R Ruby of Tiffany 155  
 +13606093 Hyline Ellen 410 #Hyline Travel Agent  
 #Hyline Ellen 9062  
 #+VDAR Lucys Boy #Traveler 1148 GDAR  
 AAF Forever Lady 1F2 +VDAR Pine Drive Lucy 5  
 +13626996 +SVF Baldrige Forever Lady1F #Bon View Bando 598  
 #LT Forever Lady 395 GDAR

CARCASS		
EPD	I+6	ULTRA
I+6		
BEPD	MARB	%IMF
+2.5	I+.11	I+0
WEPD	RE	RE
+36	I+.22	I+.32
MILK	FAT	FAT
+21	I+.003	I+.019
YEPD	%RP	%RP
+74	I+.14	I+.07

17



**LAGRAND  
NEW HORIZON  
3491**

*Another solid New  
Horizon out of the  
"Beauty" cow family.*

Calved: 2-3-2003 Bull 14389010 Tattoo: 3491  
 #B/R New Design 323 #B/R New Design 036  
 PVF New Horizon 001 B/R Ruby of Tiffany 155  
 +13606093 Hyline Ellen 410 #Hyline Travel Agent  
 #Hyline Ellen 9062  
 #+VDAR Lucys Boy #Traveler 1148 GDAR  
 Circle Oak Miss Beauty 927 +VDAR Pine Drive Lucy 5  
 13409394 +FSHK Beauty 404 #Rito 054 GDAR  
 #VDAR Beauty 930

CARCASS	
EPD	I+2
I+2	
BEPD	MARB
+2.7	I+.07
WEPD	RE
+37	I+.19
MILK	FAT
+22	I+.008
YEPD	%RP
+73	I+.10

18



**LAGRAND  
SPECIAL DESIGN  
3669**

*Perhaps, as good a  
bull produced to  
date, time will tell.*

Calved: 3-14-2003 Bull +14470877 Tattoo: 3669  
 Bon View New Design 878 #B/R New Design 036  
 WCC Special Design L309 Bon View Gammer 85  
 +13846942 N Bar Primrose 2424 #Emulation 31 (FX)  
 Primrose N Bar 9962  
 #Sitz Traveler 9929 #DHD Traveler 6807  
 TC Peg 7021 Sitz Everelda Entense 1137  
 +12797000 #TC Peg 9100 #+Leachman Prompter  
 TC Peg 6108

EPD
I+3.5
WEPD
I+49
MILK
I+22
YEPD
I+81



**19** **LAGRAND SPECIAL DESIGN 3666**

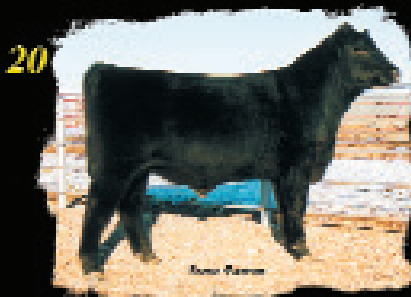
*A Special Design out of the same cow family as "Saratoga."*

Calved: 3-8-2003 Bull +14469792 Tattoo: 3666

Bon View New Design 878 #B/R New Design 036  
WCC Special Design L309 Bon View Gammer 85  
+13846942 N Bar Primrose 2424 #Emulation 31 (FX)  
Primrose N Bar 9962

#TC Dividend 963 #+Leachman Prompter  
Moffitt Queen Elba L04F TC Erica Eileen 6006  
#12723869 #MAF Queen Elba L14D #GDAR SVF Chief  
+RF Elba 088J

EPD
BEPD
I+3.6
WEPD
I+51
MILK
I+25
YEPD
I+83



**20** **LAGRAND SPECIAL DESIGN 3670**

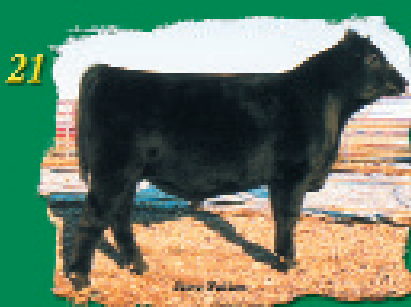
*Flushmate to Lot 19 bull.*

Calved: 3-15-2003 Bull +14469793 Tattoo: 3670

Bon View New Design 878 #B/R New Design 036  
WCC Special Design L309 Bon View Gammer 85  
+13846942 N Bar Primrose 2424 #Emulation 31 (FX)  
Primrose N Bar 9962

#TC Dividend 963 #+Leachman Prompter  
Moffitt Queen Elba L04F TC Erica Eileen 6006  
#12723869 #MAF Queen Elba L14D #GDAR SVF Chief  
+RF Elba 088J

EPD
BEPD
I+3.6
WEPD
I+51
MILK
I+25
YEPD
I+83



**21** **LAGRAND JUSTICE 3625**

*Phenotypically a beast of a bull!*

Calved: 3-19-2003 Bull 14554168 Tattoo: 3625

#Connealy Dateline #DHD Traveler 6807  
ALC Justice I20J #Eila Eila of Conanga  
13483955 ALC Travel Lass 5G Millcreek Combo  
Millcreek Travel Lass

#GV Power Drive 7369 #+Brost Power Drive  
VNAR Tamra Diamond 106E #Green Valley Ectessa 82 85  
12400390 Tamra Diamond 870 Fahren of Wye Umf 5830  
#Miss Diamond Chance 087

EPD	ULTRA
BEPD	%IMF
I+4.4	I-.13
WEPD	RE
I+37	I-.19
MILK	FAT
I+14	I-.015
YEPD	%RP
I+68	I-.17



**22** **LAGRAND 0068 PRECISION 3618**

*Out of a great two-year-old powerful bull calf.*

Calved: 3-16-2003 Bull 14390295 Tattoo: 3618

White Oak Precise 6002 #GAR Precision 1680  
Roths Millcreek Unique Stone Gate Jessie  
13495021 #Mill Creek Karen Millcreek Combo  
Millcreek Pride 7114

Famous 7001 #SAF Fame  
Hyline Pride 0010 TK Karen 1369  
+13780710 +Pride of SVF 242B #Hyline Rito 9J9 278  
Pride of Hyline 8040

CARCASS	
CW	
I-1	EPD
MARB	BEPD
I+.26	I+3.0
RE	WEPD
I+.22	I+36
FAT	MILK
I-.014	I+22
%RP	YEPD
I+.42	I+67



**23** **LAGRAND PRECISION 3648**

*Maternal brother to our 2002 sale-topper at \$21,500 going to Vollmer Angus Ranch of North Dakota and Burns Angus of Illinois.*

Calved: 4-7-2003 Bull +14392232 Tattoo: 3648

#GAR Precision 1680 #Tehama Bando 155  
Twin Valley Precision E161 (FR) 9J9 GAR 856  
12346200 +WCC Blackcap C9 (R) #SS Traveler 6T6  
Premier Blackcap 6276A (R)

+CAF Juice 1066 #+JR Juice Z005  
C&M Lady Anges 278 +Patton Lady Agnes 1054 CAF  
13069837 Summitcrest Elite 146E #Gardens Prime Time  
Summitcrest Elite 019C

EPD	ULTRA
BEPD	%IMF
I+3.5	I+.25
WEPD	RE
I+39	I+.16
MILK	FAT
I+21	I+.006
YEPD	%RP
I+80	I+.11



**24** **LAGRAND UNIVERSE 302**

*Super carcass, super donor dam!*

Calved: 3-3-2003 Bull +14515827 Tattoo: 302

#PAPA Equator 2928 #+PAPA Power 096  
PAPA Universe 515 #PAPA Envious Blackbird 8849  
12429451 PLD Eriskay PAPA 011 #PAPA Rito T Intense DHD 6844  
#PAPA Eriskay 7862

#Paramont Ambush 2172 #Bandolier Eston Durness 42B  
G Bar PratiSSia G543 EWS Miss Burgess 1720  
12491188 Tehama PratiSSia B154 Tehama 5204 Traveler 206  
Tehama PratiSSia Z160

CARCASS		
CW		
EPD	I+9	ULTRA
BEPD	MARB	%IMF
I+4.5	I+.21	I+.13
WEPD	RE	RE
I+45	I+.18	I+.28
MILK	FAT	FAT
I+19	I-.033	I-.013
YEPD	%RP	%RP
I+77	I+.45	I+.38



## LA GRAND UNIVERSE 313

Another real good carcass numbered "Universe" son.

Calved: 3-12-2003 Bull +14557246 Tattoo: 313

#PAPA Equator 2928 #+PAPA Power 096  
PAPA Universe 515 #PAPA Envious Blackbird 8849  
12429451 PLD Eriskay PAPA 011 #PAPA Rito T Intense DHD 6844  
#PAPA Eriskay 7862

#GDAR Traveler 9161 #DHD Traveler 6807  
Eileenmere 4397 BCBR #GDAR Sapphire 728  
12202347 Eileenemre 069 BCBR #VDAR Oscar 164  
Eileenmere 3102 SB

CARCASS CW		
EPD	I+15	ULTRA
BEPD	MARB	%IMF
I+3.3	I+.17	I+.10
WEPD	RE	RE
I+4.3	I+.29	I+.43
MILK	FAT	FAT
I+15	I-.033	I-.012
YEPD	%RP	%RP
I+7.8	I+.49	I+.59



## LA GRAND UNIQUE 3638

Maternal brother sold for \$14,000 to Holiday Ranch in our 2002 bull sale, maternal sister sold to Beartooth in the 2003 Denim & Diamonds Sale for \$11,000.

Calved: 3-27-2003 Bull +14390257 Tattoo: 3638

White Oak Precise 6002 #GAR Precision 1680  
Roths Millcreek Unique Stone Gate Jessie  
13495021 #Mill Creek Karen Millcreek Combo  
Millcreek Pride 7114

#Basin Ambush 3905 (FR) #Paramont Ambush 2172  
Stevenson Pride Lady 6368 Basin Heather Bloom 48C (R)  
#13036393 Stevenson Pride Lady 4066 #Basin Rainmaker 2844  
+Stevenson Pride Lady 353D

CARCASS CW		
EPD	I-13	ULTRA
BEPD	MARB	%IMF
I+1.0	I+.14	I+.12
WEPD	RE	RE
I+3.8	I+.11	I+.06
MILK	FAT	FAT
I+2.5	I-.006	I-.003
YEPD	%RP	%RP
I+7.4	I+.33	I+.11



## LA GRAND FAMOUS 2449

Maternal brother to Lots 28 and 29. A maternal sister sold for \$6,000 to Allison Burns of Oregon in our 2003 production sale.

Calved: 12-27-2002 Bull +14433501 Tattoo: 2449

#SAF Fame #Minerts Fortune 2000  
Famous 7001 #+SAF Royal Lass 1027  
12829336 TK Karen 1369 #AAR New Trend  
#VDAR Karen 978

#GAR Precision 1680 #Tehama Bando 155  
Moffitt Forever Lady 03J 9J9 GAR 856  
13673871 Ponderosa Forever Lady 127 #Connealy Dateline  
+SVF Forever Lady 0508

CARCASS CW		
EPD	I+16	ULTRA
BEPD	MARB	%IMF
I+3.3	I+.30	I+.07
WEPD	RE	RE
I+4.1	I+.36	I+.18
MILK	FAT	FAT
I+2.4	I-.001	I-.019
YEPD	%RP	%RP
I+7.8	I+.22	I+.32



## LA GRAND NEW FRONTIER 2447

Maternal brother to Lot 27, full brother to Lot 29.

Calved: 12-27-2002 Bull +14427472 Tattoo: 2447

#B/R New Design 036 #VDAR New Trend 315  
B/R New Frontier 095 B/R Blackcap Empress 76  
+13588640 White Fence Pride H1 #Connealy Dateline  
#Pleasant Pill of Conanga

#GAR Precision 1680 #Tehama Bando 155  
Moffitt Forever Lady 03J 9J9 GAR 856  
13673871 Ponderosa Forever Lady 127 #Connealy Dateline  
+SVF Forever Lady 0508

CARCASS CW		
EPD	I+14	ULTRA
BEPD	MARB	%IMF
I+2.7	I+.29	I+.19
WEPD	RE	RE
I+4.5	I+.35	I+.20
MILK	FAT	FAT
I+3.2	I-.014	I-.011
YEPD	%RP	%RP
I+8.6	I+.35	I+.19



## LA GRAND NEW FRONTIER 2465

Full brother to Lot 28, he's consigned to Black Hills Show & Sale, February 2, 2004, Rapid City, South Dakota. His flush sister sells too! He's a beast!

Calved: 12-31-2002 Bull +14427474 Tattoo: 2465

#B/R New Design 036 #VDAR New Trend 315  
B/R New Frontier 095 B/R Blackcap Empress 76  
+13588640 White Fence Pride H1 #Connealy Dateline  
#Pleasant Pill of Conanga

#GAR Precision 1680 #Tehama Bando 155  
Moffitt Forever Lady 03J 9J9 GAR 856  
13673871 Ponderosa Forever Lady 127 #Connealy Dateline  
+SVF Forever Lady 0508

CARCASS CW		
EPD	I+14	ULTRA
BEPD	MARB	%IMF
I+2.7	I+.29	I+.19
WEPD	RE	RE
I+4.5	I+.35	I+.20
MILK	FAT	FAT
I+3.2	I-.014	I-.011
YEPD	%RP	%RP
I+8.6	I+.35	I+.19



## LA GRAND E161 PRECISION 2457

Calved: 12-29-2002 Bull 14414723 Tattoo: 2457

#GAR Precision 1680 #Tehama Bando 155  
Twin Valley Precision E161 (FR) 9J9 GAR 856  
12346200 +WCC Blackcap C9 (R) #SS Traveler 6T6  
Premier Blackcap 6276A (R)

#B/R New Design 323 #B/R New Design 036  
EF Rita 1143 B/R Ruby of Tiffany 155  
+13892486 +Shady Brook Rita Belle 564G #AAR New Trend  
GAR Traveler 2401

CARCASS CW		
EPD	I+10	
BEPD	MARB	
I+2.2	I+.27	
WEPD	RE	
I+3.8	I+.44	
MILK	FAT	
I+2.2	I-.006	
YEPD	%RP	
N/A	I+.45	